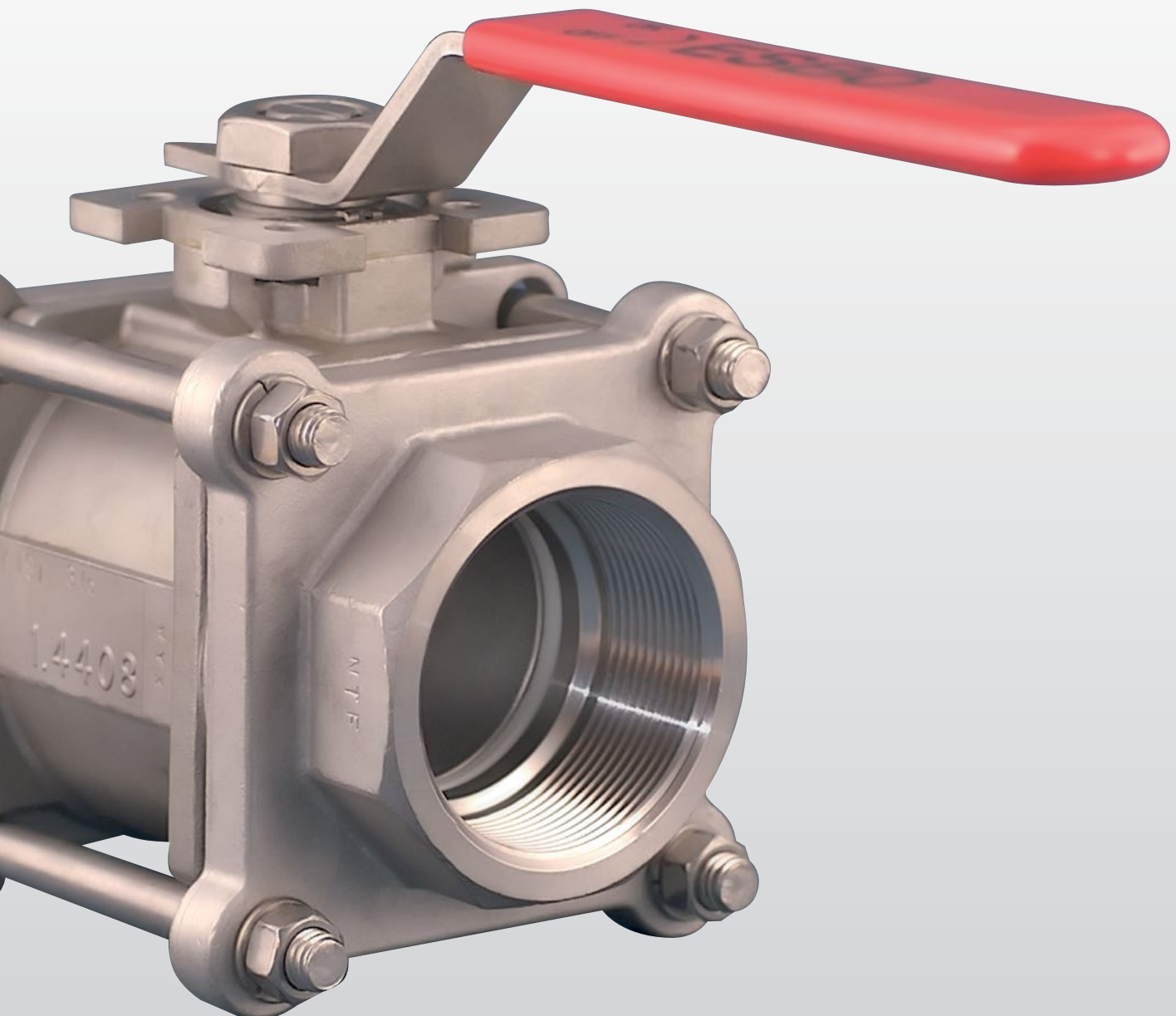




ESBOvalve

# M 302 Gas

The M 302 Gas is a silicone-free, blow-off proof ball valve with three-piece body, threaded ends, ISO 5211 top flange and gas approval



ESBOvalve

# M 302 Gas

ESBOvalve M 302 Gas is a ball valve with three-piece body, threaded ends and gas approval. It features an ISO 5211 top flange for fitting actuators or similar accessories, is silicone-free and has a blow-off proof stem design.



## Technical data

Through-bore	1/4" – 4"
Overall length	DIN 3202 M3
Pressure class	PN 63
Gas pressure class	16 bar (DIN-DVGW-NG-MOP 16)
Enclosure, end cap, ball	1.4408 (316)
Spindle	1.4401 (316)
Thrust washer, spring washer, nut	1.4301 (304)
O-ring (DVGW-GAS, DIN 3535 Part 3)	Viton
Ball seal, sliding ring, packing box, etc.	PTFE, TFM 1600 or RTFE
Handle	1.4301 (304), plastic covering
Threaded ends	DIN EN 10226-1 (previously DIN 2999-1), NPT or BS
Gas connections	DIN EN 10226-1
Actuators	Hand lever, electrical or pneumatic actuation (ISO 5211)
Gas type	All gases (incl. gases according to DVGW worksheets G260 and G262, VP 303)

## Dimensions

Size	Bore	ØD	L	H	I	F
1/4"	DN 8	11,2	60	32,4	9	F03-F04
3/8"	DN 10	12,7	60	32,4	9	F03-F04
1/2"	DN 15	15	75	40,5	9	F03-F04
3/4"	DN 20	20	80	41,1	11	F04
1"	DN 25	25,4	90	44,5	11	F04
1¼"	DN 32	31,8	110	49,4	11	F04
1½"	DN 40	38,1	120	77	14	F05-F07
2"	DN 50	50,8	140	66,5	14	F05-F07

ØD: Bore diameter of the ball

L: Face-to-face length of the ball valve

H: Height from boresight to the top edge of the ISO 5211 top flange

I: Size of the square-end for fitting actuators

F: Hole pattern of the ISO 5211 top flange

All dimensions in millimeters (mm)

## Approvals

TR-Certificate of the Russian Federation

DIN-DVGW-NG-MOP 16

DVGW-VP 303



**ESBO-Edelstahl**  
**Rohre und Verbindungsteile GmbH**

Erbsengasse 28  
D-69469 Weinheim  
Germany

Phone +49 6201 63081  
Fax +49 6201 17917

[info@esbo-edelstahl.com](mailto:info@esbo-edelstahl.com)  
[www.esbo-edelstahl.com](http://www.esbo-edelstahl.com)